

VENT BOSS®

WELD STRONG • BREATHE FREE

MODELS
S210
S211

BY ROBOVENT

SERIES 200
PLUG-N-PLAY WORKSTATIONS

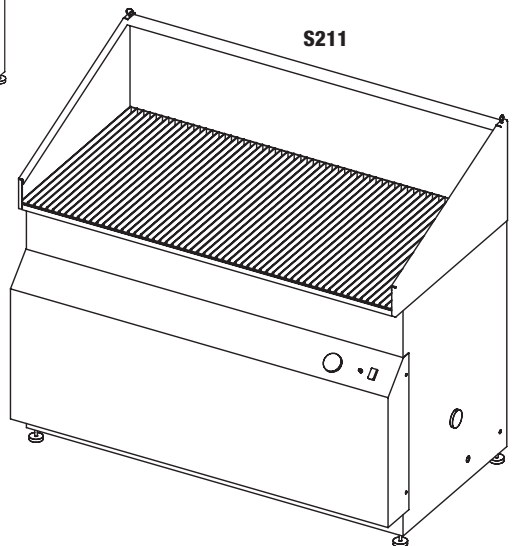
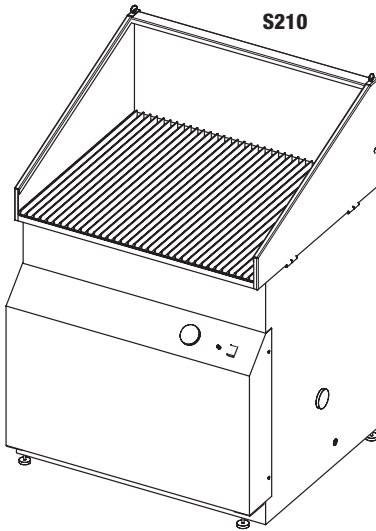


OWNER'S MANUAL
INSTALLATION, OPERATION & MAINTENANCE



OWNER'S MANUAL

Installation, Operation & Maintenance



Manufactured by:

RoboVent Product Group, Inc.

37900 Mound Road Sterling Heights, MI 48310 USA

(855) 558.VENT www.ventboss.com

©2014 RoboVent Product Group, Inc. All rights reserved.

CONGRATULATIONS!

Dear Customer,

Thank you for purchasing a VentBoss product. This manual will help you use the many features available to customize the unit to your specific welding needs.

When your VentBoss needs scheduled maintenance, keep in mind that VentBoss has specially trained staff in servicing our equipment. We would be pleased to answer your questions and concerns you may have.

At VentBoss we are committed to making your shop/factory a safe and healthy environment for your workers. Please take time to read this manual thoroughly before installing and operating the unit.



TABLE OF CONTENTS

Important Safety Instructions	Section 100	Page 6
Features of the S210 & S211	Section 200	Page 7-8
Receiving & Inspection	Section 300	Page 9
General Description	Section 400	Page 10
Installation	Section 500	Page 11
Operation	Section 600	Page 12
General Maintenance Procedure	Section 700	Page 13-17
Troubleshooting	Section 800	Page 18
Wiring Diagram	Section 900	Page 19

IMPORTANT SAFETY INSTRUCTIONS



Failure to follow all instructions may result in electric shock, bodily injury and/or destruction of the unit



Use of controls, adjustments, or performance of procedures other than those specified herein, may result in electrical shock.

IMPORTANT SAFETY INSTRUCTIONS

1. Read all instructions thoroughly.
2. Heed all warnings.
3. Do not block intake or exhaust vents. Keep the exhaust vent free from debris and materials that could restrict airflow. Prolonged restriction could damage the motor and electrical components. Any blockage of the air flow will decrease efficiency of this unit.
4. Refer all service matters to qualified service personnel. Servicing is required when the unit is damaged in any way including the control panel, supply wiring or in the case of excessive filter loading.
5. **Risk of serious injury or death!** Use extreme care to make sure you are never in a position where your body (or any item you are in contact with, such as a screwdriver or test instrument) can accidentally touch the blower wheel.
6. **Disconnect power before working on the motor or blower wheel. The motor or blower wheel should be disassembled only by a factory authorized technician.**



SECTION 200 FEATURES OF THE S210 & S211



FIGURE 1

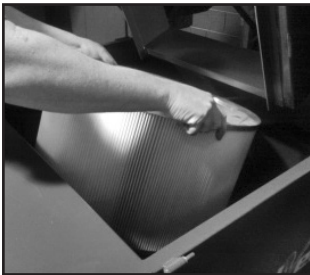


FIGURE 2

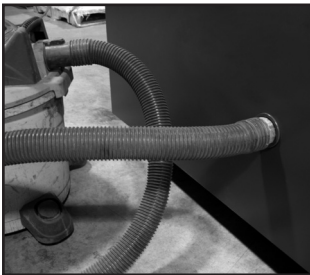


FIGURE 3

- 1. Manual Pulse Cleaning System:** The VentBoss Series 200 Workstation comes equipped with a Manual Filter Cleaning System utilizing a pre-calculated pulse of high-pressure air into the core of the cartridge filters. This reverse-jet cleaning can add months to your filter life. Figure 1.
- 2. Easy Access Filter:** For your convenience, each of the VentBoss Series 200 Workstations have an easy access to the filter element. No special tools are required to access the filter plenum, just release two latches, lift up the table top and remove the filter. Filters can be changed in only a few minutes with no more effort than swinging up the table top. Figure 2.
- 3. Quiet Operation:** A built-in acoustic lining of high density sound absorbing materials has been implemented as part of the blower compartment. The acoustically designed plenum greatly reduces motor and blower noise levels and decreases ambient noise to the facility.
- 4. Heavy Duty Construction:** Each VentBoss fume collector comes with our heavy duty 14 gauge steel construction and quality built guarantee. A durable baked on powdercoat finish assures a lifetime of use.
- 5. High Grade Merv 13 Filter:** A High Grade Merv 13 Filter comes standard with each VentBoss Series 200 Workstation which contributes to its high efficient filtration and carries our one year filter guarantee. This durable filter can be back-pulsed countless times and still give endless hours of filtration.
- 6. Dust Removal:** Convenient cleanout ports make removal of collected dust and particulate easy with a shop vacuum (Figure 3).

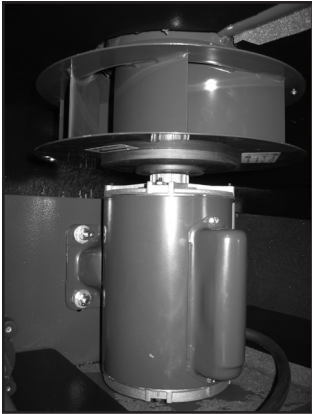


FIGURE 4

- 7. High Performance Blower:** The aluminum Acoustafoil blower is the heart of the VentBoss Series 200 units. This High Performance blower is engineered for High-Output air volume with 6.7” of maximum SP. Figure 4.

- 8. Built-In Spark Arrestance:** The VentBoss internal SparkOut plenum quickly extinguished sparks created through the welding or grinding process. Figure 5.

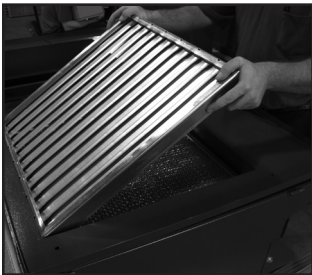


FIGURE 5

Receiving

VentBoss equipment is typically shipped on skids or in crates. The number of skids/ crates will vary, depending on the type, size and accessories ordered. These skids/ crates are too heavy to lift by hand, and will need to be unloaded by an industrial forklift or similar equipment.

Inspection

A visual inspection of your equipment should be performed before it is removed from the truck. Dents, scratches, and other damages should be noted on the shipping documents, and also photographed. The structural integrity of the housing can be adversely affected by large dents. VentBoss should be immediately notified of any structural damage to your equipment. It is the purchaser's responsibility to file shortage reports and damage claims with the carrier and with your VentBoss Representative. The carrier is responsible for any damage to the equipment while it is in transit unless specific arrangements are made otherwise.

Compare the number of items received against the carrier's bill of lading. Inspect all items for apparent damage. Immediately report any shortages or obvious damage to the carrier and to your local VentBoss Representative, call the factory at 1 (855) 558.VENT, or email: customer.service@ventboss.com.

When all skids are completely unpacked and uncrated, check all items received against the packing lists. Further inspect the unit and components for hidden damage. Again, report any shortage or damage to the carrier and to your local VentBoss Representative.

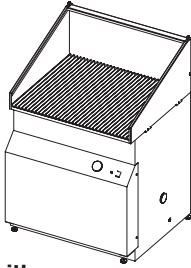
The filter cartridges are typically shipped installed in your collector. Be sure to check them for alignment, as they may have shifted during transit. If they have shifted, it is possible that damage may have been done. Remove all filter cartridges and inspect thoroughly.

Note: Do not return any damaged components without first contacting your VentBoss Representative to obtain a Returned Goods Authorization (RGA).

Small Parts

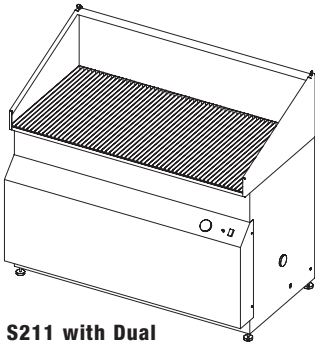
Carefully inspect all packing material before it is discarded, to be sure that no small parts have been missed.

SECTION 400
GENERAL DESCRIPTION



**S210 with
36"W x 36"L Table**

The VentBoss S210 & S211 Workstations pull dust, smoke and fumes down and away from the operator's breathing zone. The contaminants are filtered out of the air, and clean air is returned to the plant. To use, just connect the power and a compressed air hose.



**S211 with Dual
36"W x 60"L Table**

SECTION 500

INSTALLATION

VentBoss S210 & S211 Workstations come pre-assembled for immediate use. Please go through the packing list to make sure you have all the required parts. The cartridge filter and spark arrestance filters and baffles are already installed inside the unit.

Electrical Hook-Up

VentBoss S210 & S211 Workstations come ready to plug into a 20 amp 110 volt service. (If ordered as a 480 volt 3-phase model the connection must be done by a licensed electrician and in accordance with NEC and all applicable local codes.)



FIGURE 6



FIGURE 7

Pulsing the Series 200 Workstation (Cleaning the Cartridge Filter)

The VentBoss S210 & S211 Workstations come equipped with a Manual Pulsing System (MPS) located on the front or right side of the collector. To operate, compressed air must be hooked up to the air inlet. (See Compressed Air Hook-Up)

After each days use, press the solenoid plunger 5-15 times to back-flush the filter cartridge. This cleaning process will loosen the collected particulate from the cleaning cartridge and will be collected in the tray below.

For best results, press the solenoid plunger in short, timed blast of 3-5 seconds between each pulse. The motor **MUST** be turned off for this process.

Compressed Air Hook-Up

IMPORTANT! First and foremost, your VentBoss Series 200 Workstations unit needs a clean, dry compressed air source, approximately 80 to 90 PSI.

Many problems can be traced back to the presence of oil or water in the compressed air system. If contamination is present, both the cartridges and cleaning system will suffer.

An appropriately sized quick fit air-line connector will need to be threaded into the provided 3/8" NPT adapter. A permanent line can be directly connected to the accumulator tank or a shop air hose can be used when back flushing the filters.

GENERAL MAINTENANCE PROCEDURES



FIGURE 8



FIGURE 9

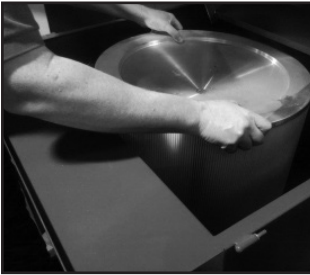


FIGURE 10

Note: These procedures are to be performed while there is no welding occurring!

Replacing the Filter Cartridge

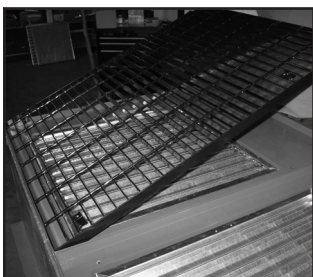
The high grade polyester filter of the VentBoss can be back-pulsed endless times and washed before it needs replaced. Prior to making a decision to replace the filter, first follow the procedures of “Pulsing the Series 200 Workstation in Section 600. The cartridge can also be taken out and manually cleaned with compressed air or a power washer. If the VentBoss Workstation still does not draw sufficiently, then replace the cartridge.

To replace the filter cartridge, unlatch the two draw latches on the right and left sides of the unit (Figure 8). Lift the table top until it is fully open (Figure 9). Note that the top is secured by two lanyards. This will keep the top from falling back behind the table.

Pull the large diameter filter straight up and out the top of the unit (Figure 10) and discard in an appropriate container.

Replace the Polydex filter with a new VentBoss replacement. Insert the new cartridge making sure it is securely seated on the filter ring just above the blower opening. Once the cartridge is seated in place you can close the top plate over the filter and latch the draw latches until they pull the bar-grate top down onto the cartridge filter. This seals the filter and keeps particulate from entering the clean air plenum.

Replacement filters may be ordered by calling VentBoss at 1-855-558-VENT.

**FIGURE 11****FIGURE 12****FIGURE 13****FIGURE 14****Replacing the Metal Baffle Filters**

VentBoss S210 & S211 Workstations come equipped with three internal baffle filters located in the spark arrestance plenum. This plenum is located right under the top bar-grate.

To access this plenum first follow procedures under “Replacing the Filter Cartridge.” Lift the table top and remove the (4) 5/16” bolts located on the bottom side of the top plate as shown (Figure 11). The bar-grate will be loose so make sure it is fully supported during this process. Remove the bar-grate (Figure 12).

The first spark arrestor will be the metal Baffle Filter (Figure 13). Remove this filter and clean. The next two filters will be the metal mesh filters (Figure 14). These two filters should always be placed below the first Baffle Filter.

All the spark arrestance baffles should be removed and cleaned on a regular basis (check every two weeks). If particulate builds up on these baffles the risk of fire in the system is greatly increased. Typically, these baffles should be removed and cleaned with a hot detergent solution every month. Filters that are bent or deformed beyond repair should be replaced. See Specification Sheet for ordering proper replacements.

CAUTION! DO NOT replace these baffle filters with anything other than what was originally installed in your unit. Failure to do so will greatly increase the risk of fire.

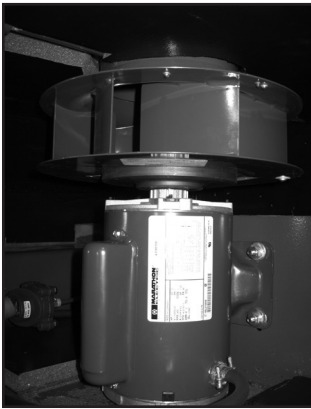
Placement of the first layer baffle filter is extremely important as the baffles should run vertical with cup side facing toward the top of the collector. Failure to place the baffle in this way will increase the risk of fire.

**FIGURE 15****FIGURE 16****Particulate Removal (Cleaning)**

After several hours of operation the VentBoss Series 200 Workstation will need to be cleaned. Before cleaning back flush the filter by following the procedure in Section 600 of Pulsing the Series 200 Workstation. Give each filter several cleaning pulses. Make sure the Air Hook-Up is connected to a 80-90 psi dry air.

The VentBoss S210 has two dust bin areas located on either side of the unit. The VentBoss S211 has a total of three. This area is accessed from outside the unit by a rubber plug. Turn the wing nut counterclockwise until the plug becomes loose (Figure 15). Remove and insert the suction end of a shop vacuum into the cleanout port until you get a good seal (Figure 16). Turn on the vacuum until all the dust is removed. Repeat for the other side of the unit. The VentBoss S211 will have a third clean-out port on the front of the collector.

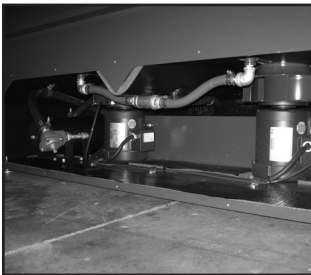
Cleaning frequency of the dust bins will vary depending on the welding situation and use. Periodically check the tray for particulate. When 2-3 inches of dust forms at the bottom of the bin remove with a vacuum.

**FIGURE 17****Blower Maintenance**

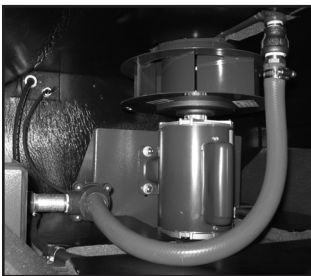
The motor and blower in your VentBoss Workstation will require very little attention, although it is important to make sure it is kept clean. If your motor is fitted with grease nipples, they must be lubricated every six months.

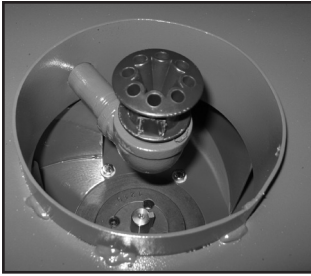
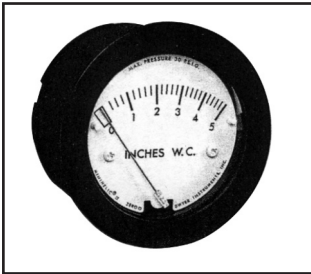
Installation of a new blower wheel requires a certified VentBoss Technician to balance the wheel and motor. Contact VentBoss at 1-855-558-VENT.

Access to the motor, blower, air accumulator tank and solenoid is through the back panel. Do not open this panel without performing a full OSHA Lockout Procedure. Remove the panel as shown.

**FIGURE 18****Solenoid Valve Maintenance**

The Pulse Solenoid is located on the side of the accumulator tank as shown below. Under normal conditions, the pulse valve will last for the life of the collector. Clean, dry compressed air, at 90 PSI, will assure long, maintenance free life of the solenoid. (See Specifications Sheet for replacement part information.)

**FIGURE 19**

**FIGURE 20****FIGURE 21****Pulse Nozzle**

The Pulse Nozzle (Figure 20) in your VentBoss Workstation is extremely important in your cleaning process. No maintenance should be needed but periodically make sure the internal air jets are free from debris and particulate.

The Differential Pressure Gauge

The Differential Pressure Gauge (Figure 21) registers the pressure across the filter media. The unit of measurement used is “inches of water.” When the unit has a clean or new filter the pressure gauge should read approximately 1 inch of W.C. or less.

A record of this pressure differential should be recorded and kept for future reference. During use of your VentBoss Workstation the pressure will increase as the filters load up. (Cartridge filters should be replaced when the gauge reads approximately 4 inches W. C. To change the cartridge follow the procedure for Cartridge Filter Change.

SECTION 800

TROUBLESHOOTING

The VentBoss Series 200 Workstation is making excessive noise. Check the following:

1. Make sure the blower wheel is not hitting against the bottom filter plate.
2. Check that all motor bolts are securely tightened.
3. Make sure motor bearings are good. (Amperage rating will be higher than normal.)
4. Blower wheel could be out of balance. If the blower wheel has gone out of balance, there will be excessive vibration. In this case, please contact the VentBoss Technical Department at 1.855.558.VENT.

Manual Pulse Filter Cleaning System is not operating:

1. Verify that the airline is connected to the air tank.
2. Check air tank pressure. The pulse valve works best when pressurized at 85 PSI maximum.
3. Check diaphragm on solenoid valve. If the correct pressure is supplied to the air tank then a problem may exist with the solenoid diaphragm. See Specifications Sheet to order a new diaphragm kit or complete valve from VentBoss Service Department.

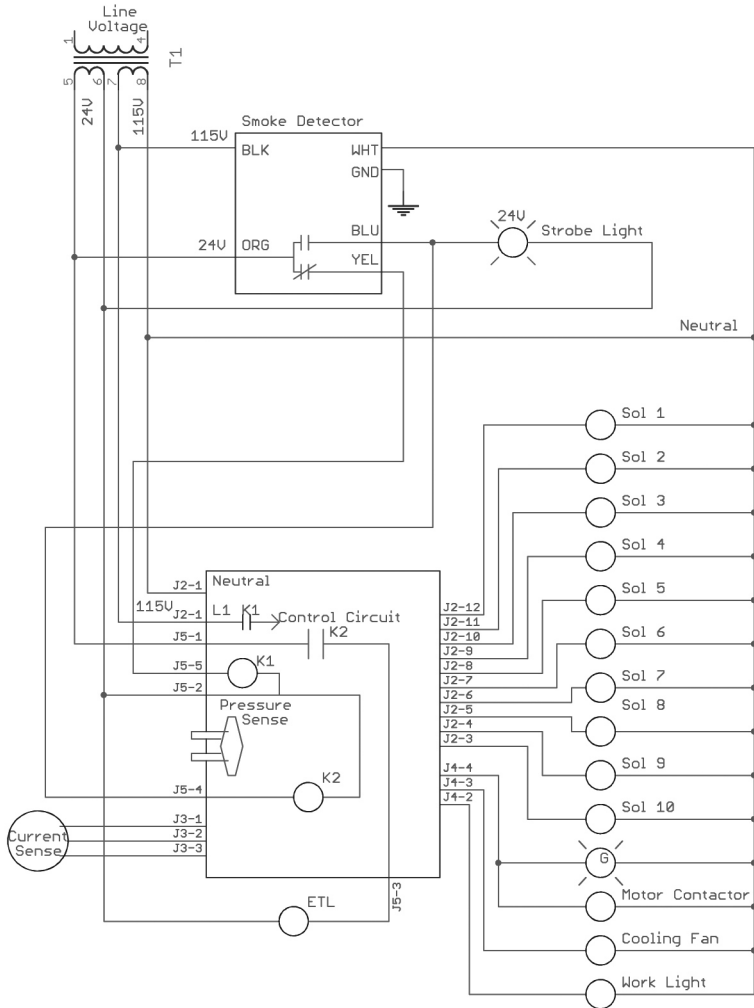
Little or no suction across intake. Check the following:

1. Cartridge filter is loaded. Review “Pulsing the VentBoss Series 200 Collector” in Section 600 under OPERATION. With the air hooked up press the Solenoid Plunger 25-30 times with a 3-5 second spacing between each pulse. Make sure the unit is turned off for this process.
2. If using a fume arm make sure the butterfly valve behind the intake hood is not closed. Sometimes this valve will close on it's own, cutting off most of the air supply.

Cartridge filter loads up but no dust in the dust tray. Check the following:

1. Check that the Manual Pulsing System is working properly.
2. Check for oil or moisture on the filter media. If oil or moisture exists in the air supply it will transfer to the cartridge.
3. In some cases high oil content is introduced in the welding process causing the oil to vaporize. This will cause the cartridge filters to load up prematurely. Call the VentBoss Service Department at 1.855.558.VENT for more information.

SECTION 900 GENERAL WIRING DIAGRAM





***VENT*BOSS[®]**
WELD STRONG • BREATHE FREE

VentBoss is a Division of RoboVent Product Group, Inc.

37900 Mound Road Sterling Heights, Michigan 48310 USA
855.558.VENT • WWW.VENTBOSS.COM