

CFX-1000

Dimensions: 31"D x 35"W x 48"H

Base Weight: 400 lbs.

Equipment

Controls: Manual On / Off Switch

Voltage Options: 230 V / 480 V / 575 V

Heavy Duty Construction: Fully welded 14 gauge steel

Filter Design: Included as standard to improve filter life and reduce energy consumption: Oil Smoke or Oil Mist Option (*See below*)

Blower / Motor Combination: Direct drive designed for energy efficiency

Noise Level: 85 dBA

Warranty: 1 year on cabinet; 1 year on all components ([See warranty document for details](#))

Options

Controls: VFD Motor Control

Acoustical Silencer: Full top plenum (5 dBA reduction)

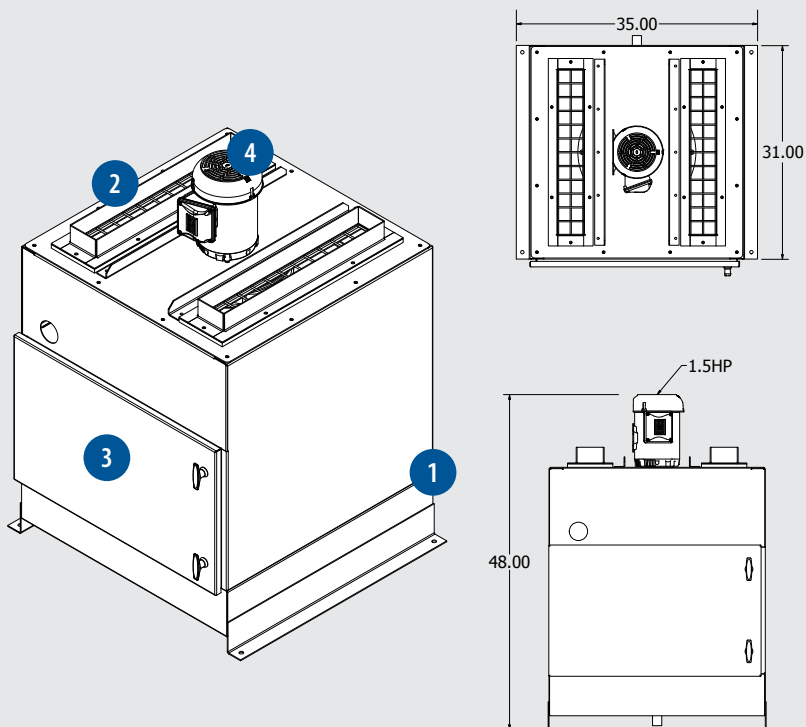
Auto Start: CMR-20

After Filters: HEPA (Add 14" to height)

Required Selections

Filter Part #	Filter Description
S1000B750-12	Oil Smoke
S500B375-12	Oil Mist

Specifications



- 1 Inlet Area (on back of unit)
- 2 Clean Air Exhaust
- 3 Filter Access Door
- 4 Motor

For exact equipment dimensions, please click submittal drawing below.

Model No.	Configuration	CFM @ "SP	FLA @ 480 V
CFX-1000	1.5 HP • 13 @ 38%	1,000 @ 8.0	3 AMPS

Additional Resources and Downloads (click image to retrieve material)



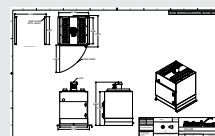
Owner's Manual



Product Sheet



Website



Submittal Drawing